

Acta Crystallographica Section E

## Structure Reports

Online

ISSN 1600-5368

1,4-Phenylenebis(methylene)  
dicarbamate

Zhi Li

Department of Chemistry, School of Science, Beijing Jiaotong University, Beijing 100044, People's Republic of China  
Correspondence e-mail: zhili@bjtu.edu.cn

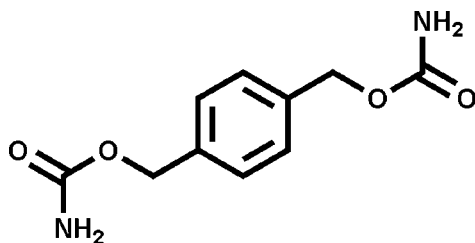
Received 16 February 2012; accepted 23 March 2012

Key indicators: single-crystal X-ray study;  $T = 294$  K; mean  $\sigma(\text{C}-\text{C}) = 0.002$  Å;  
R factor = 0.038; wR factor = 0.100; data-to-parameter ratio = 11.1.

The title compound,  $\text{C}_{10}\text{H}_{12}\text{N}_2\text{O}_4$ , is a phenyl dicarbamate with crystallographically imposed inversion symmetry. The dihedral angle between the carbamoyloxy plane [i.e. the plane of the  $\text{N}-\text{C}(\text{O})-\text{O}$  fragment; r.m.s. deviation =  $0.002$  (3) Å] and the plane of the aryl ring is  $29.2$  (1)°. In the crystal, two different centrosymmetric  $\text{N}-\text{H}\cdots\text{O}$  hydrogen-bond interactions are observed; these are described as  $R_2^2(8)$  and  $R_4^2(8)$  in graph-set notation. The rings form an alternating sequence, linking the molecules into a sheet structure parallel to (011).

## Related literature

For self-assembled monolayers of alkyl carbamate and alkyl dicarbamate, see: Kim *et al.* (2003); Kim *et al.* (2005a,b). For the synthesis of the title compound, see: Takeuchi *et al.* (1971, 1974).



## Experimental

## Crystal data

$\text{C}_{10}\text{H}_{12}\text{N}_2\text{O}_4$   
 $M_r = 224.22$   
Triclinic,  $P\bar{1}$

$a = 4.9542$  (14) Å  
 $b = 6.4194$  (18) Å  
 $c = 8.418$  (2) Å

$\alpha = 79.290$  (4)°  
 $\beta = 79.351$  (4)°  
 $\gamma = 88.640$  (4)°  
 $V = 258.50$  (13) Å<sup>3</sup>  
 $Z = 1$

Mo  $K\alpha$  radiation  
 $\mu = 0.11$  mm<sup>-1</sup>  
 $T = 294$  K  
 $0.30 \times 0.28 \times 0.22$  mm

## Data collection

Bruker SMART CCD area-detector diffractometer  
Absorption correction: multi-scan (SADABS; Sheldrick, 1996)  
 $T_{\min} = 0.962$ ,  $T_{\max} = 0.975$   
1310 measured reflections  
902 independent reflections  
764 reflections with  $I > 2\sigma(I)$   
 $R_{\text{int}} = 0.022$

## Refinement

$R[F^2 > 2\sigma(F^2)] = 0.038$   
 $wR(F^2) = 0.100$   
 $S = 1.06$   
902 reflections  
81 parameters

H atoms treated by a mixture of independent and constrained refinement  
 $\Delta\rho_{\text{max}} = 0.15$  e Å<sup>-3</sup>  
 $\Delta\rho_{\text{min}} = -0.21$  e Å<sup>-3</sup>

Table 1

Hydrogen-bond geometry (Å, °).

$D-\text{H}\cdots A$	$D-\text{H}$	$\text{H}\cdots A$	$D\cdots A$	$D-\text{H}\cdots A$
$\text{N1}-\text{H1A}\cdots\text{O1}^{\text{i}}$	0.88 (2)	2.11 (2)	2.930 (2)	155.6 (17)
$\text{N1}-\text{H1B}\cdots\text{O1}^{\text{ii}}$	0.93 (2)	2.07 (2)	2.9888 (19)	169.8 (16)

Symmetry codes: (i)  $x + 1, y, z$ ; (ii)  $-x + 1, -y + 2, -z$ .

Data collection: SMART (Bruker, 2007); cell refinement: SAINT (Bruker, 2007); data reduction: SAINT; program(s) used to solve structure: SHELXS97 (Sheldrick, 2008); program(s) used to refine structure: SHELXL97 (Sheldrick, 2008); molecular graphics: Mercury (Macrae *et al.*, 2008); software used to prepare material for publication: Mercury and SHELXL97.

The author thanks Beijing Jiaotong University for financial support. This research was supported by the Fundamental Research Funds for the Central Universities (2011JBM295).

Supplementary data and figures for this paper are available from the IUCr electronic archives (Reference: NK2147).

## References

- Bruker (2007). SMART and SAINT. Bruker AXS Inc., Madison, Wisconsin, USA.  
Kim, K., Plass, K. E. & Matzger, A. J. (2003). *Langmuir*, **19**, 7149–7152.  
Kim, K., Plass, K. E. & Matzger, A. J. (2005a). *J. Am. Chem. Soc.* **127**, 4879–4887.  
Kim, K., Plass, K. E. & Matzger, A. J. (2005b). *Langmuir*, **21**, 647–655.  
Macrae, C. F., Bruno, I. J., Chisholm, J. A., Edgington, P. R., McCabe, P., Pidcock, E., Rodriguez-Monge, L., Taylor, R., van de Streek, J. & Wood, P. A. (2008). *J. Appl. Cryst.* **41**, 466–470.  
Sheldrick, G. M. (1996). SADABS. University of Göttingen, Germany.  
Sheldrick, G. M. (2008). *Acta Cryst.* **A64**, 112–122.  
Takeuchi, S. (1974). *Makromol. Chem.* **175**, 2241–2252.  
Takeuchi, S. & Ninagawa, E. (1971). *Bull. Chem. Soc. Jpn.* **44**, 3184–3185.

## supplementary materials

*Acta Cryst.* (2012). E68, o1227 [doi:10.1107/S1600536812012718]

## 1,4-Phenylenebis(methylene) dicarbamate

Zhi Li

### Comment

Recently, self-assembled monolayers of alkyl carbamate and alkyl dicarbamate have been investigated and characterized (Kim *et al.*, 2003, 2005a,b). For further study of the self-assembled activities of dicarbamates, herein, we report the synthesis and structure of a phenyl dicarbamate, 1,4-phenylenebis(methylene) dicarbamate (I) (Fig. 1). In (I), The dihedral angle between the carbamoyloxy plane [O1, C1, N1, O2 plane, mean deviation: 0.002 (3) Å] and the benzene plane is 29.2 (1)°. As shown in Fig 2, the O atom (O1 atom) of the carbonyl group acts as a double H-receptor. The two H atoms of the same amino group interact with the O atom (O1 atom) of the carbonyl group in the adjacent molecule to form two different intermolecular N—H···O hydrogen bonds (N1—H1A···O1 and N1—H1B···O1; Table 1). These are described as  $R_2^2(8)$  and  $R_2^4(8)$  in graph set notation. The rings are located in an alternating sequence to link the molecules into a two dimensional sheet structure.

### Experimental

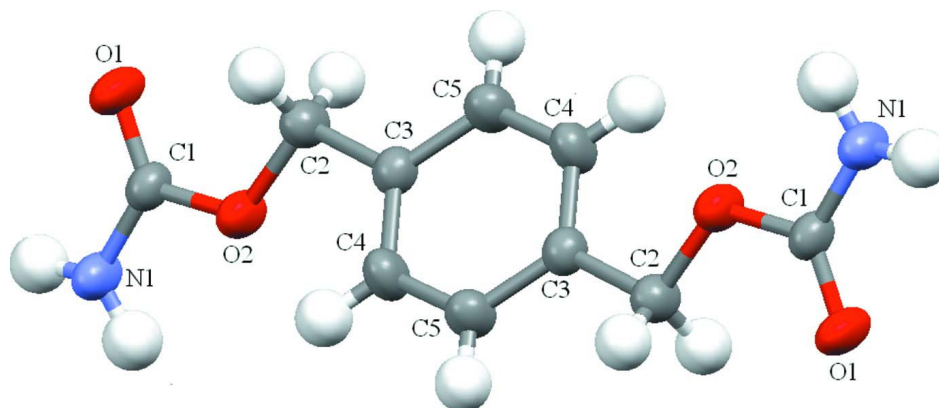
The title compound was synthesized by transesterification of ethyl carbamate with 1,4-phenylenedimethanol (Takeuchi *et al.* 1971, 1974) as followed: A solution of 8.9 g (100 mmol) ethyl carbamate and 1.38 g (10 mmol) 1,4-phenylenedimethanol in 25 ml of toluene was heated to reflux in the presence of catalytic amount of zinc chloride for 10 h. After cooling to room temperature, the solvent was evaporated under vacuum. The residue was subjected to flash chromatography and the title compound was obtained as colorless crystal. (1.34 g, Yield: 60%; m.p. 484–486 K). Crystals suitable for single-crystal X-ray analysis were grown by slow evaporation of a DMF solution.

### Refinement

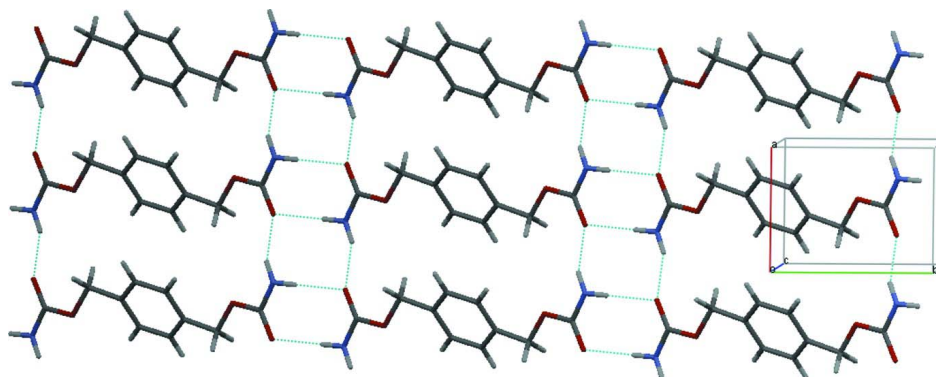
H atoms were placed in calculated positions [C—H = 0.93–0.97 Å] and allowed to ride on the parent atoms, with  $U_{iso}$  values constrained to be  $1.2U_{eq}$  of the parent atom. The bond length of N1—H1A is 0.88 (2) Å and the bond length of N1—H1B is 0.93 (2) Å.

### Computing details

Data collection: *SMART* (Bruker, 2007); cell refinement: *SAINTE* (Bruker, 2007); data reduction: *SAINTE* (Bruker, 2007); program(s) used to solve structure: *SHELXS97* (Sheldrick, 2008); program(s) used to refine structure: *SHELXL97* (Sheldrick, 2008); molecular graphics: Mercury (Macrae *et al.*, 2008); software used to prepare material for publication: Mercury (Macrae *et al.*, 2008 and *SHELXL97* (Sheldrick, 2008).


**Figure 1**

The structure of the title compound. Displacement ellipsoids are drawn at the 30% probability level.


**Figure 2**

Packing diagram for (I). The dashed lines show N—H...O hydrogen bonds between neighboring molecules.

### 1,4-Phenylenebis(methylene) dicarbamate

#### Crystal data

$C_{10}H_{12}N_2O_4$

$M_r = 224.22$

Triclinic,  $P\bar{1}$

Hall symbol:  $-P\ 1$

$a = 4.9542$  (14) Å

$b = 6.4194$  (18) Å

$c = 8.418$  (2) Å

$\alpha = 79.290$  (4)°

$\beta = 79.351$  (4)°

$\gamma = 88.640$  (4)°

$V = 258.50$  (13) Å<sup>3</sup>

$Z = 1$

$F(000) = 118$

$D_x = 1.440$  Mg m<sup>-3</sup>

Melting point: 485 K

Mo  $K\alpha$  radiation,  $\lambda = 0.71073$  Å

Cell parameters from 819 reflections

$\theta = 2.5$ – $26.1$ °

$\mu = 0.11$  mm<sup>-1</sup>

$T = 294$  K

Needle, colourless

$0.30 \times 0.28 \times 0.22$  mm

*Data collection*

Bruker SMART CCD area-detector diffractometer	1310 measured reflections
Radiation source: fine-focus sealed tube	902 independent reflections
Graphite monochromator	764 reflections with $I > 2\sigma(I)$
phi and $\omega$ scans	$R_{\text{int}} = 0.022$
Absorption correction: multi-scan (SADABS; Sheldrick, 1996)	$\theta_{\text{max}} = 25.0^\circ$ , $\theta_{\text{min}} = 2.5^\circ$
$T_{\text{min}} = 0.962$ , $T_{\text{max}} = 0.975$	$h = -4 \rightarrow 5$
	$k = -7 \rightarrow 5$
	$l = -9 \rightarrow 9$

*Refinement*

Refinement on $F^2$	Secondary atom site location: difference Fourier map
Least-squares matrix: full	Hydrogen site location: inferred from neighbouring sites
$R[F^2 > 2\sigma(F^2)] = 0.038$	H atoms treated by a mixture of independent and constrained refinement
$wR(F^2) = 0.100$	$w = 1/[\sigma^2(F_o^2) + (0.0539P)^2 + 0.0526P]$
$S = 1.06$	where $P = (F_o^2 + 2F_c^2)/3$
902 reflections	$(\Delta/\sigma)_{\text{max}} < 0.001$
81 parameters	$\Delta\rho_{\text{max}} = 0.15 \text{ e } \text{\AA}^{-3}$
0 restraints	$\Delta\rho_{\text{min}} = -0.21 \text{ e } \text{\AA}^{-3}$
Primary atom site location: structure-invariant direct methods	

*Special details*

**Geometry.** All e.s.d.'s (except the e.s.d. in the dihedral angle between two l.s. planes) are estimated using the full covariance matrix. The cell e.s.d.'s are taken into account individually in the estimation of e.s.d.'s in distances, angles and torsion angles; correlations between e.s.d.'s in cell parameters are only used when they are defined by crystal symmetry. An approximate (isotropic) treatment of cell e.s.d.'s is used for estimating e.s.d.'s involving l.s. planes.

**Refinement.** Refinement of  $F^2$  against ALL reflections. The weighted  $R$ -factor  $wR$  and goodness of fit  $S$  are based on  $F^2$ , conventional  $R$ -factors  $R$  are based on  $F$ , with  $F$  set to zero for negative  $F^2$ . The threshold expression of  $F^2 > \sigma(F^2)$  is used only for calculating  $R$ -factors(gt) *etc.* and is not relevant to the choice of reflections for refinement.  $R$ -factors based on  $F^2$  are statistically about twice as large as those based on  $F$ , and  $R$ -factors based on ALL data will be even larger.

*Fractional atomic coordinates and isotropic or equivalent isotropic displacement parameters ( $\text{\AA}^2$ )*

	$x$	$y$	$z$	$U_{\text{iso}}^*/U_{\text{eq}}$
O1	0.2931 (2)	0.76540 (17)	0.12334 (15)	0.0498 (4)
O2	0.5723 (2)	0.51407 (16)	0.22471 (13)	0.0427 (4)
N1	0.7519 (3)	0.7787 (2)	0.02862 (18)	0.0451 (4)
C1	0.5223 (3)	0.6939 (2)	0.12480 (18)	0.0361 (4)
C2	0.3389 (3)	0.4099 (2)	0.3354 (2)	0.0419 (4)
H2A	0.1959	0.3894	0.2749	0.050*
H2B	0.2661	0.4963	0.4162	0.050*
C3	0.4273 (3)	0.1990 (2)	0.41993 (17)	0.0348 (4)
C4	0.6516 (3)	0.0921 (2)	0.35056 (19)	0.0432 (4)
H4	0.7555	0.1532	0.2496	0.052*
C5	0.2772 (3)	0.1045 (2)	0.57031 (19)	0.0417 (4)
H5	0.1262	0.1741	0.6189	0.050*
H1A	0.912 (4)	0.735 (3)	0.053 (2)	0.057 (5)*
H1B	0.740 (4)	0.914 (3)	-0.031 (2)	0.054 (5)*

Atomic displacement parameters ( $\text{\AA}^2$ )

	$U^{11}$	$U^{22}$	$U^{33}$	$U^{12}$	$U^{13}$	$U^{23}$
O1	0.0332 (7)	0.0417 (7)	0.0668 (8)	0.0023 (5)	-0.0147 (5)	0.0152 (5)
O2	0.0355 (6)	0.0318 (6)	0.0531 (7)	0.0018 (4)	-0.0082 (5)	0.0120 (5)
N1	0.0345 (8)	0.0387 (8)	0.0538 (8)	0.0008 (6)	-0.0088 (6)	0.0135 (6)
C1	0.0359 (8)	0.0287 (8)	0.0421 (8)	0.0007 (6)	-0.0127 (6)	0.0029 (6)
C2	0.0373 (9)	0.0350 (9)	0.0468 (9)	0.0009 (6)	-0.0043 (7)	0.0060 (7)
C3	0.0364 (8)	0.0291 (8)	0.0373 (8)	-0.0008 (6)	-0.0086 (6)	-0.0001 (6)
C4	0.0470 (10)	0.0375 (9)	0.0368 (8)	0.0027 (7)	0.0021 (7)	0.0042 (6)
C5	0.0417 (9)	0.0348 (8)	0.0432 (9)	0.0071 (7)	-0.0005 (7)	-0.0013 (7)

Geometric parameters ( $\text{\AA}$ ,  $^\circ$ )

O1—C1	1.2163 (19)	C2—H2B	0.9700
O2—C1	1.3430 (17)	C3—C5	1.383 (2)
O2—C2	1.4348 (18)	C3—C4	1.386 (2)
N1—C1	1.331 (2)	C4—C5 <sup>i</sup>	1.384 (2)
N1—H1A	0.88 (2)	C4—H4	0.9300
N1—H1B	0.93 (2)	C5—C4 <sup>i</sup>	1.384 (2)
C2—C3	1.503 (2)	C5—H5	0.9300
C2—H2A	0.9700		
C1—O2—C2	116.37 (12)	C3—C2—H2B	109.9
C1—N1—H1A	119.3 (12)	H2A—C2—H2B	108.3
C1—N1—H1B	116.7 (11)	C5—C3—C4	118.33 (14)
H1A—N1—H1B	118.9 (16)	C5—C3—C2	119.38 (14)
O1—C1—N1	125.38 (14)	C4—C3—C2	122.27 (14)
O1—C1—O2	123.02 (14)	C5 <sup>i</sup> —C4—C3	120.78 (15)
N1—C1—O2	111.59 (13)	C5 <sup>i</sup> —C4—H4	119.6
O2—C2—C3	108.74 (12)	C3—C4—H4	119.6
O2—C2—H2A	109.9	C3—C5—C4 <sup>i</sup>	120.89 (15)
C3—C2—H2A	109.9	C3—C5—H5	119.6
O2—C2—H2B	109.9	C4 <sup>i</sup> —C5—H5	119.6
C2—O2—C1—O1	-1.5 (2)	C5—C3—C4—C5 <sup>i</sup>	0.2 (3)
C2—O2—C1—N1	179.38 (13)	C2—C3—C4—C5 <sup>i</sup>	-178.21 (15)
C1—O2—C2—C3	172.41 (12)	C4—C3—C5—C4 <sup>i</sup>	-0.2 (3)
O2—C2—C3—C5	156.37 (14)	C2—C3—C5—C4 <sup>i</sup>	178.25 (15)
O2—C2—C3—C4	-25.2 (2)		

Symmetry code: (i)  $-x+1, -y, -z+1$ .

Hydrogen-bond geometry ( $\text{\AA}$ ,  $^\circ$ )

$D-H\cdots A$	$D-H$	$H\cdots A$	$D\cdots A$	$D-H\cdots A$
N1—H1A $\cdots$ O1 <sup>ii</sup>	0.88 (2)	2.11 (2)	2.930 (2)	155.6 (17)
N1—H1B $\cdots$ O1 <sup>iii</sup>	0.93 (2)	2.07 (2)	2.9888 (19)	169.8 (16)

Symmetry codes: (ii)  $x+1, y, z$ ; (iii)  $-x+1, -y+2, -z$ .